



TECHNICAL DATA

Symmetrix Sani-Coat

Smooth opaque sheet

Code: TDS-CM-23

Inspection: 00

Valid from: 06/09/18

Page : 1 of 5

Product description

Symmetrix® is a plastic laminate designed to satisfy the most demanding applications offering the same visual appearance as ceramic tiles at a competitive price and with important advantages in time of installation and minimum maintenance costs. They are ideal solutions for commercial applications such as kitchens, bathrooms, dining areas and in general any place where ceramic tile is used.

Symmetrix® contains an innovative Sani-coat coating that, applied to the sheet, seals the surface of the material, offering numerous advantages over the traditional ceramic tile joint..

Sector

Industrial / Commercial / Health/ Infrastructure /Residential

Application

Interior coating::

- Chemical plants, food processing
- Supermarkets, kitchens, restaurants
- Hospitals, laboratoires, pharmacies
- Bathrooms, kitchens, laundries
- Schools, museums, offices
- Not designed for areas of excessive humidity, such as showers and car washes.

Advantage

Resistant to stains, scratches, mold and mildew.

High resistance. It does not crack and the joint does not deteriorate over time as it does with ceramic tile.

Great impact resistance due to its fiberglass core.

Easy to clean without the need for a brush or special tools, 100% washable

Low maintenance. Does not require external painting.

Easy to install, which means savings in time. Investment at low cost



Ceramic tile



Symmetrix

Range

Thickness	Coating	Finish	Color	Sizes
2,3 mm	Sani-coat Without coating	Square Rectangular	Ivory, Silver, Black, Green (everglade), Blue (periwinkle)	Width = 1.22m Length = 2.44 m



Colors

Ivory	Silver	Black	Green (everglade)	Blue (periwinkle)

Finishes

Square	Rectangular

Coating

Sani-coat	
 <p>Sani-coat applied on the sheet seals the surface of the material offering advantages in front of the traditional joint of the ceramic tile</p>	 <p>Ceramic tile</p>

Technical characteristics

Properties	Rule	Value
Flexural strength	ASTM D-790	110 MPa
Flexion modulus	ASTM D-790	689 Mpa
Tensile strength	ASTM D-638	51 Mpa
Tension modulus	ASTM D-638	11.721 Mpa
Izod impact	ASTM D-256	689 J/m
Thermal expansion coefficient	ASTM D-696	0,0288 mm/mm °C
Barcol hardness	ASTM D 2583	50
Water absorption	ASTM D-570	0,15 %
Density	ASTM D 792	1.8 g/cm ³
Scratch resistance	EN 438-2 (punto 25)	Grado 1
Resistencia al Manchado	EN 438-2 (punto 26)	5 ^(*) (without changes)
Reaction to fire Flame speed Smoke generation	ASTM E84	Clase III/C < 200 < 450
Fire certification	EN 13501-1	E
Molf and fungi resistance	ASTM D 3273	10 (total absence of disfigurement) ()
Service temperature	-	-40 a 54 °C ^(**)

* Staining Agents: Acetone, Sodium Hydroxide (25%), Hydrogen Peroxide (30%), Suspension of carbon black in paraffin oil (simulating shoe polish) and Bitumen..

** It can be discolored near heat sources, such as ovens, fryers, heat lamps and toasters, where temperatures exceed 54 ° C.

Standard specification of the product

- Thickness: ± 10%
- Width: ± 3,18 mm
- Length: ± 3,18 mm (en lámina)
- Unbalance: ≤ 3,18 mm

Certificates

- Reaction to fire certificate according to EN 13501-1. Classification obtained: E
- Fire Certificate according to ASTM E-84. Classification obtained: Class III / C
- Mold and Fungi Resistance Certificate according to ASTM D3273



TECHNICAL DATA

Symmetrix Sani-Coat

Smooth opaque sheet

Code: TDS-CM-23
Inspection: 00
Valid from: 06/09/18
Page : 3 of 5

Instalación recomendada

Allow the laminates to acclimate to the living room environment before installation. After unpacking, place the laminates in the room where they will be installed for at least 48 hours before installation. Install the laminates when the temperature of the room and the material is approximately 21°C.

Application is recommended over a solid backing, such as drywall or plywood. Surface to be covered must be clean, dry, solid, straight, and free from drywall dust, bumps, projections, loose plaster, loose paint, or any unsealed joint compound wider than 76,2 mm. For seams with excessive joint compound wider than 76,2 mm, seal drywall joint using a 50/50 mixture of latex paint and water applied lightly over the drywall compound only

Do not position FRP Panel joints directly over drywall or plywood joints

Cut FRP Panels face up using a table saw or face down using a circular saw

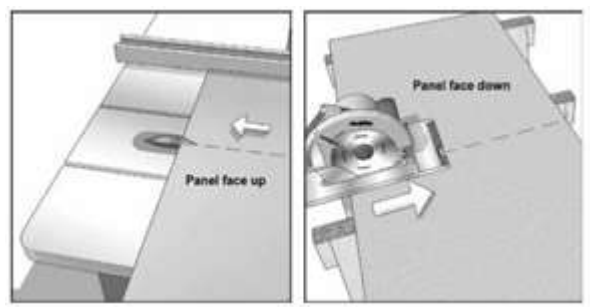
For grooved Panels, proper panel orientation is required to ensure groove alignment.

Tools needed. Table saw or circular saw with fine tooth blade, heat gun, ruler / tape, drill, file, hammer, plummet / ridge/ support

Cleaning. For best results, engage in a regular cleaning schedule to avoid dirt build-up. In general, any mild cleaner applied with a sponge, soft bristle brush or towel is considered safe and effective. Avoid using any cleaner or stain remover considered abrasive.

High Humidity Areas. In wet or high humidity areas, the molding profiles must surround all the laminates and must be properly sealed with a continuous silicone sealant cord to ensure a tight seal.

Cutting panels. Cut FRP Panels face up with a table saw or face down with a circular saw using a fine-tooth blade. For cutouts, drill four holes and radius all corner cuts to avoid chipping. For small jobs, FRP Panels can be cut using a strong pair of cutting shears.



Application of Adhesive. Always apply the adhesive to the FRP Panel, be sure the existing sub wall is porous, straight, clean, and dry. Apply over plywood or drywall that is void of excessive joint compound. If the sub wall is not porous, Construction Adhesive should be used

- Perform a trial to ensure acceptable adhesion and performance. Adhesive is easiest to spread at approximately 21°.
- FRP Panels must be installed while the adhesive is fresh, within 5 minutes of application. Adhesive on the FRP Panel face should be removed promptly using mineral spirits. Adhesive coverage is 19,5 m2 per 13,2 liters
- Apply adhesive to the entire back of the FRP Panel using a notched spreader or trowel. Trowel size is 4,76 mm wide x 6,35 mm deep x 12,7 mm c-c notch.



TECHNICAL DATA

Symmetrix Sani-Coat

Smooth opaque sheet

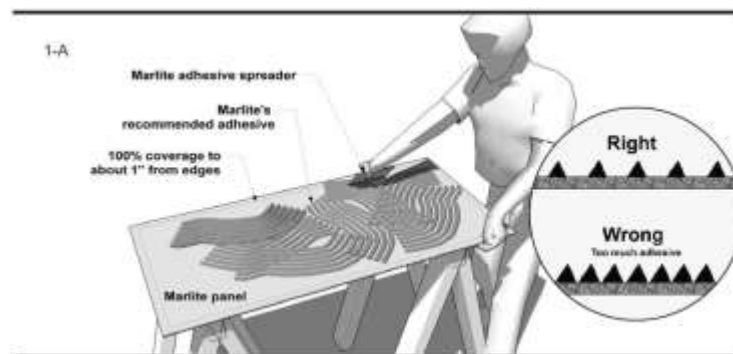
Code: TDS-CM-23

Inspection: 00

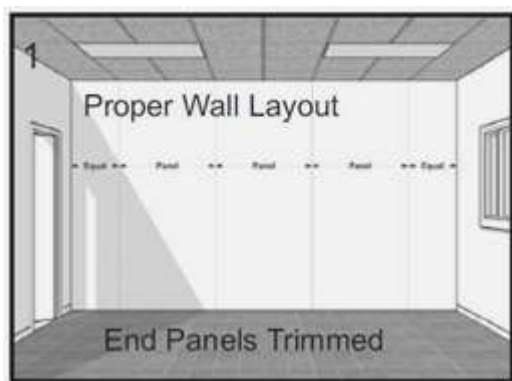
Valid from: 06/09/18

Page : 4 of 5

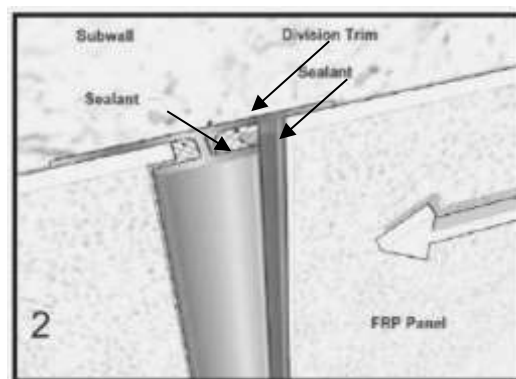
- 100% coverage over the entire FRP Panel back is required except approximately 25,45 mm at edges. Use the notches in the spreader to achieve the exact depth of adhesive. The spreader end must be kept at 90° to the panel surface. Avoid too heavy a coat. To assure proper ridges when spreading adhesive, keep notches of the spreader clean by placing it in a pail of water when not in use. Once FRP Panel is adhered to wall, apply pressure by rolling. Be sure of 100% adhesive transfer.



Installation Steps for FRP Trim Molding

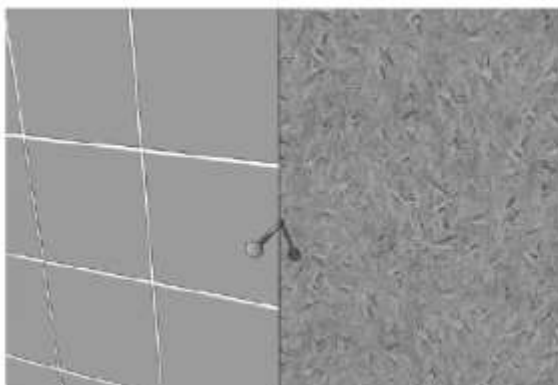


For a balanced appearance, establish a center line of area to be covered and install Division Trim Molding and work toward corners.

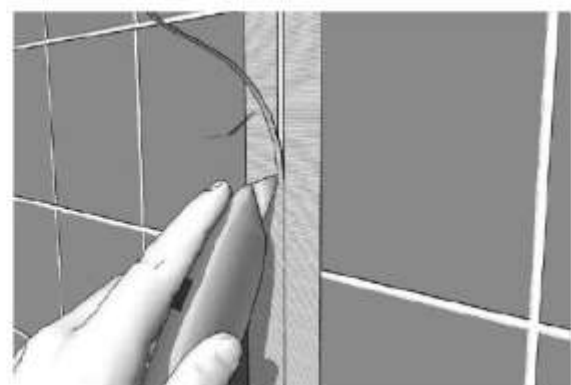


Do not fit panels too tightly into Trim Molding. Allow at least 1/8" space in all channels for panel expansion after installation is completed

Application of Seam Join



1. Use a nail for FRP Panel spacing. Dry fit before gluing to ensure groove alignment. If grooves fail to align, flip panel top to bottom



2. After adhesive sets, remove nails and apply a 50 mm or wider strip of masking tape. Trim out groove with a sharp utility knife using the panel edges as guides



3. Apply a bead of harmonizing Silicone Sealant.



4. Finish the joint with a plastic spoon or finder tip. Wait one hour before removing tape. Remove excess silicone sealant..

Accessoires

Profiles : PVC (White color) and aluminium



1. Inside corner



2. Outside corner



3. Division bar



4. Top finish

Storage Recommendations

- Store laminates indoors in cool, dry and well-ventilated areas.
- The panels must be stacked on pallets of no more than 5 pallets in height.
- Do not allow moisture to accumulate in the intermediate laminates.
- Inspect all panels carefully before installation

La información referida en esta Ficha Técnica está basada en la experiencia y en los ensayos realizados por la compañía, sin que esto suponga ningún tipo de responsabilidad sobre sus diferentes aplicaciones, dado que Stabilit Europa no tiene ningún tipo de control sobre su uso final.

